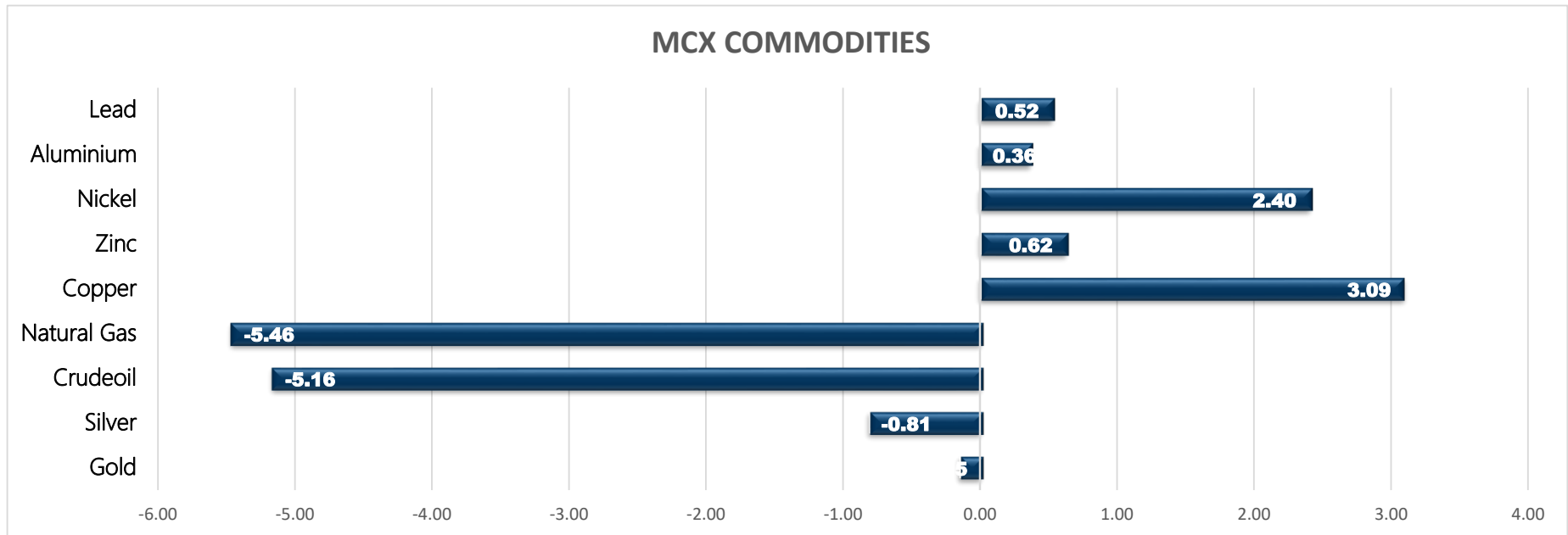


Commodity	Close	% Change
Gold	45349.00	-0.15
Silver	64562.00	-0.81
Crudeoil	4281.00	-5.16
Natural Gas	183.60	-5.46
Copper	690.10	3.09
Zinc	219.65	0.62
Nickel	1231.70	2.40
Aluminium	178.80	0.36
Lead	163.55	0.52

Commodity	Ltp*	% Change
Gold\$	1734.00	0.36
Silver\$	24.93	0.24
Crudeoil\$	58.65	-4.56
Natural Gas\$	2.51	-4.85
Lme Copper	9032.50	2.58
Lme Zinc	2829.00	2.17
Lme Nickel	16550.00	2.00
Lme Lead	1940.00	-1.22
Lme Aluminium	2245.50	0.70

Economical Data	
EUR	Spanish Unemployment Change
EUR	Italian Monthly Unemployment Rat
EUR	Italian Monthly Unemployment Rat
EUR	Sentix Investor Confidence
EUR	Unemployment Rate
USD	JOLTS Job Openings
USD	IBD/TIPP Economic Optimism

MCX COMMODITIES



MCX MARKET SYNOPSIS

Contract	Open	High	Low	Close	Rs Chg	% Chg	Volume	OI	% Chg
Copper Apr	670.00	693.90	670.00	690.10	20.70	3.09	13420	3311	21.86
Copper May	674.65	693.65	674.65	690.35	20.45	3.05	345	177	73.53
Zinc Apr	218.60	220.80	218.15	219.65	1.35	0.62	3566	1687	0.00
Zinc May	218.85	219.75	218.00	218.95	1.10	0.50	93	125	92.31
Nickel Apr	1204.50	1242.50	1196.60	1231.70	28.90	2.40	4816	1390	-4.07
Nickel May	1204.30	1243.40	1200.40	1233.90	29.30	2.43	234	73	37.74
Aluminium Apr	178.20	179.35	177.55	178.80	0.65	0.36	1281	1499	1.63
Aluminium May	177.25	178.50	177.20	178.00	0.10	0.06	34	52	15.56
Lead Apr	162.70	163.90	162.40	163.55	0.85	0.52	1627	455	8.08
Lead May	162.75	163.35	161.80	162.95	0.75	0.46	166	5	-28.57

MCX PIVOT

Contract	Sup - 3	Sup - 2	Sup - 1	Pivot	Res - 1	Res - 2	Res - 3	OI Status
Copper Apr	651.60	660.80	675.50	684.70	699.40	708.60	723.30	Fresh Buying
Zinc Apr	215.50	216.80	218.20	219.50	220.90	222.20	223.60	Short Covering
Nickel Apr	1158.80	1177.70	1204.70	1223.60	1250.60	1269.50	1296.50	Short Covering
Aluminium Apr	176.10	176.80	177.90	178.60	179.70	180.40	181.50	Fresh Buying
Lead Apr	161.20	161.80	162.70	163.30	164.20	164.80	165.70	Fresh Buying

INTERNATIONAL MARKET SYNOPSIS

Commodity	Open	High	Low	Ltp*	Rs Chg	% Chg	LME STOCKS	
LME Copper	8782.00	8823.00	8695.00	8805.00	227.50	2.58	LME Copper	-725
LME Zinc	2802.50	2816.00	2763.50	2769.00	60.00	2.17	LME Zinc	-350
LME Nickel	16175.00	16250.00	15940.00	16225.00	325.00	2.00	LME Nickel	-1062
LME Lead	1979.50	1986.50	1954.00	1964.00	-24.00	-1.22	LME Lead	-125
LME Aluminium	2215.00	2239.00	2213.00	2230.00	15.50	0.70	LME Aluminium	-7675

INTERNATIONAL PIVOT

Commodity	Sup - 3	Sup - 2	Sup - 1	Pivot	Res - 1	Res - 2	Res - 3
LME Copper	8598	8646	8726	8774	8854	8902	8982
LME Zinc	2697	2730	2750	2783	2802	2835	2855
LME Nickel	15717	15828	16027	16138	16337	16448	16647
LME Lead	1917	1936	1950	1968	1982	2001	2015
LME Aluminium	2190	2201	2216	2227	2242	2253	2268

COPPER

Copper trading range for the day is 660.8-708.6.

Copper prices gained after data showed a fall in smelting activities globally due to a shortage of feedstock material.

Global copper smelting slipped to the lowest levels in at least five years in March, especially in China, amid supply shortages

Yangshan copper premium fell to \$57 a tonne, its lowest since Nov. 30, indicating weakening demand for imported copper into China.

Warehouse stock for Copper at LME was at 143775mt that is down by -725mt.



ZINC

Zinc trading range for the day is 216.8-222.2.

Zinc gained prices after data showed that social inventories of refined zinc ingots decreased 14,500 mt to 233,500 mt.

Prices also remained supported in the wake of improving economic prospects backed by the Biden government's more than \$2 trillion stimulus plan.

China's economic recovery continued in March, powered by a strong surge in the service sector, data showed.

Warehouse stock for Zinc at LME was at 270500mt that is down by -350mt.



NICKEL

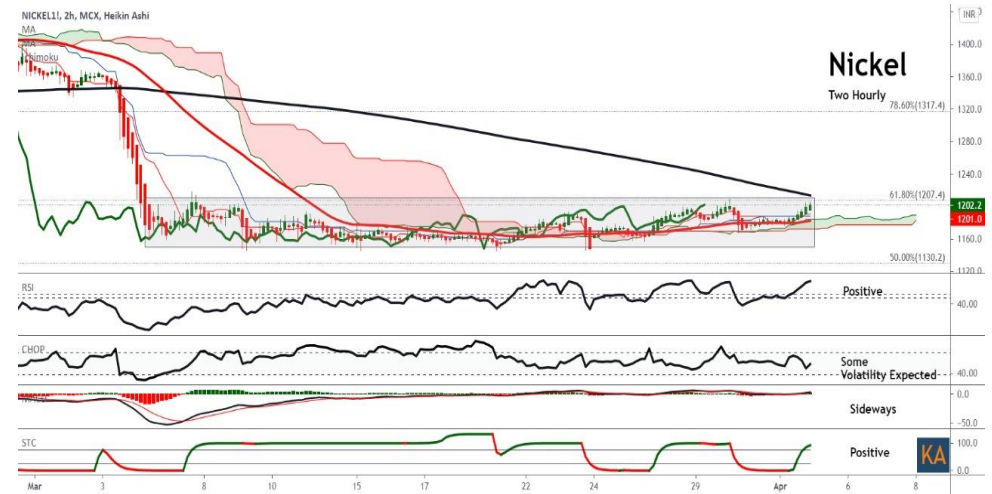
Nickel trading range for the day is 1177.7-1269.5.

Nickel prices gained as support seen after data showed that the PMI for downstream nickel industries, stood at 52.44 in March, up 5.5 points from February.

Support also seen amid prospects of a strong US economic recovery.

The US economy created the most jobs in 7 months in March, the payrolls report showed.

Warehouse stock for Nickel at LME was at 259182mt that is down by -1062mt.



ALUMINIUM

Aluminium trading range for the day is 176.8-180.4.

Aluminium prices rose as traders worried that Chinese efforts to reduce smelter pollution will restrict output and supply will fall short of demand.

Soaring shipping costs, booming demand and tight supplies of primary and scrap aluminium are likely to fuel further price rises

Japanese aluminium buyers have agreed to pay the highest premium in six years to get their metal in the second quarter.

Warehouse stock for Aluminium at LME was at 1889400mt that is down by -7675mt.



SPREAD SYNOPSIS

Copper				
Month	Rate	Apr	May	Jun
Apr	690.10		0.25	0.45
May	690.35			0.20
Jun	690.55			

Zinc				
Month	Rate	Apr	May	Jun
Apr	219.65		-0.70	-1.40
May	218.95			-0.70
Jun	218.25			

Spread History			
Commodity	Max	Min	Avg
Copper	-19.90	5.35	64.00
Zinc	-7.25	0.38	2.40
Nickel	-7.25	0.38	2.40
Aluminium	-7.10	1.05	3.10
Lead	-22.20	3.72	13.20

Nickel				
Month	Rate	Apr	May	Jun
Apr	1231.70		2.20	4.30
May	1233.90			2.10
Jun	1236.00			

Aluminium				
Month	Rate	Apr	May	Jun
Apr	178.80		-0.80	-1.60
May	178.00			-0.80
Jun	177.20			

COPPER PRICE MOVEMENT SINCE 2011													
Year	JAN	FEB	MAR	APR	MAY	JUN	JUL	AUG	SEP	OCT	NOV	DEC	Growth
2011	451.90	445.75	425.30	415.90	417.35	421.10	436.85	427.10	349.80	392.95	409.75	406.00	-33.50
	2.82	-1.36	-4.59	-2.21	0.35	0.90	3.74	-2.23	-18.10	12.34	4.28	-0.92	-7.62
2012	417.15	417.70	431.65	443.90	420.25	429.40	422.55	424.30	441.05	419.70	436.30	443.75	37.75
	2.75	0.13	3.34	2.84	-5.33	2.18	-1.60	0.41	3.95	-4.84	3.96	1.71	9.30
2013	440.05	418.20	410.20	381.00	413.05	406.60	421.55	486.95	466.40	452.50	444.40	468.55	24.80
	-0.83	-4.97	-1.91	-7.12	8.41	-1.56	3.68	15.51	-4.22	-2.98	-1.79	5.43	5.59
2014	444.95	443.20	404.15	403.00	410.80	422.35	436.10	417.95	416.00	414.70	390.75	399.10	-69.45
	-5.04	-0.39	-8.81	-0.28	1.94	2.81	3.26	-4.16	-0.47	-0.31	-5.78	2.14	-14.82
2015	342.85	371.80	378.45	404.60	386.65	368.75	335.40	341.75	342.70	336.55	301.15	315.50	-83.60
	-14.09	8.44	1.79	6.91	-4.44	-4.63	-9.04	1.89	0.28	-1.79	-10.52	4.77	-20.95
2016	311.60	322.00	321.25	334.20	312.50	327.15	329.70	305.60	328.55	326.05	396.05	372.90	57.40
	-1.24	3.34	-0.23	4.03	-6.49	4.69	0.78	-7.31	7.51	-0.76	21.47	-5.85	18.19
2017	406.10	397.85	380.75	367.60	368.75	385.20	410.65	434.55	427.95	444.70	431.40	466.00	93.10
	8.90	-2.03	-4.30	-3.45	0.31	4.46	6.61	5.82	-1.52	3.91	-2.99	8.02	24.97
2018	450.90	446.00	436.80	449.40	457.05	446.15	430.15	414.00	452.95	435.70	433.10	407.75	-58.25
	-3.24	-1.09	-2.06	2.88	1.70	-2.38	-3.59	-3.75	9.41	-3.81	-0.60	-5.85	-12.50
2019	437.60	464.70	451.05	450.30	404.50	411.05	444.15	443.95	438.05	437.95	432.60	441.25	33.50
	7.32	6.19	-2.94	-0.17	-10.17	1.62	8.05	-0.05	-1.33	-0.02	-1.22	2.00	8.22
2020	427.25	421.80	376.80	403.45	416.20	464.70	500.75	527.30	525.20	526.40	582.30	594.70	153.45
	-3.17	-1.28	-10.67	7.07	3.16	11.65	7.76	5.30	-0.40	0.23	10.62	2.13	34.78
2021	596.40	702.95	667.95										73.25
	0.29	17.87	-4.98										12.32
Average	-1.25	2.69	-2.53	0.32	-1.17	1.29	2.89	1.32	-0.10	0.35	2.05	2.44	Average

ZINC PRICE MOVEMENT SINCE 2011

Year	JAN	FEB	MAR	APR	MAY	JUN	JUL	AUG	SEP	OCT	NOV	DEC	Growth
2011	107.25	111.90	103.50	101.20	101.30	103.50	109.95	104.85	93.20	93.75	101.35	98.45	-10.55
	-1.61	4.34	-7.51	-2.22	0.10	2.17	6.23	-4.64	-11.11	0.59	8.11	-2.86	-9.68
2012	105.60	104.00	102.85	107.10	107.15	103.95	103.20	100.60	110.45	99.30	110.55	111.45	13.00
	7.26	-1.52	-1.11	4.13	0.05	-2.99	-0.72	-2.52	9.79	-10.10	11.33	0.81	13.20
2013	113.95	111.05	102.90	110.50	106.30	109.70	109.55	128.25	117.80	118.25	116.00	129.05	17.60
	2.24	-2.54	-7.34	7.39	-3.80	3.20	-0.14	17.07	-8.15	0.38	-1.90	11.25	15.79
2014	122.80	130.95	119.05	123.95	122.40	132.45	144.55	142.90	141.10	143.40	138.00	137.20	8.15
	-4.84	6.64	-9.09	4.12	-1.25	8.21	9.14	-1.14	-1.26	1.63	-3.77	-0.58	6.32
2015	130.40	127.70	129.90	149.75	141.05	127.10	122.85	121.30	108.90	109.10	103.20	106.15	-31.05
	-4.96	-2.07	1.72	15.28	-5.81	-9.89	-3.34	-1.26	-10.22	0.18	-5.41	2.86	-22.63
2016	109.25	122.45	118.40	129.20	129.30	142.15	148.80	155.90	158.10	163.90	185.55	173.80	67.65
	2.92	12.08	-3.31	9.12	0.08	9.94	4.68	4.77	1.41	3.67	13.21	-6.33	63.73
2017	193.10	187.70	180.40	169.45	165.95	178.25	179.50	200.95	210.20	215.05	205.95	207.60	33.80
	11.10	-2.80	-3.89	-6.07	-2.07	7.41	0.70	11.95	4.60	2.31	-4.23	0.80	19.45
2018	228.60	227.75	214.10	211.75	209.05	202.15	180.40	176.10	186.65	192.60	180.20	171.95	-35.65
	10.12	-0.37	-5.99	-1.10	-1.28	-3.30	-10.76	-2.38	5.99	3.19	-6.44	-4.58	-17.17
2019	195.15	197.80	221.35	223.20	203.00	200.50	192.25	185.30	185.55	187.85	185.05	179.00	7.05
	13.49	1.36	11.91	0.84	-9.05	-1.23	-4.11	-3.62	0.13	1.24	-1.49	-3.27	4.10
2020	174.45	154.85	145.50	150.60	159.00	163.50	184.00	196.05	190.80	201.80	220.20	214.40	35.40
	-2.54	-11.24	-6.04	3.51	5.58	2.83	12.54	6.55	-2.68	5.77	9.12	-2.63	11.81
2021	205.90	219.55	220.00										5.60
	-3.96	6.63	0.20										11.81
Average	0.89	1.16	-2.09	2.65	-2.59	0.61	2.69	2.59	-0.91	1.82	0.66	0.77	Average

NICKEL PRICE MOVEMENT SINCE 2011

Year	JAN	FEB	MAR	APR	MAY	JUN	JUL	AUG	SEP	OCT	NOV	DEC	Growth
2011	1243.90	1294.00	1165.40	1202.40	1045.80	1037.70	1098.80	1022.90	898.80	940.90	869.60	992.20	-119.60
	11.88	4.03	-9.94	3.17	-13.02	-0.77	5.89	-6.91	-12.13	4.68	-7.58	14.10	-10.76
2012	1050.20	974.30	927.40	936.60	923.80	935.40	892.80	884.40	978.50	878.50	931.70	935.70	-56.50
	5.85	-7.23	-4.81	0.99	-1.37	1.26	-4.55	-0.94	10.64	-10.22	6.06	0.43	-5.69
2013	979.10	895.70	921.50	824.00	826.70	823.90	829.20	928.20	869.80	892.20	836.90	864.50	-71.20
	4.64	-8.52	2.88	-10.58	0.33	-0.34	0.64	11.94	-6.29	2.58	-6.20	3.30	-7.61
2014	855.80	902.80	945.50	1097.40	1139.60	1124.30	1130.40	1140.30	1016.80	971.00	996.80	945.70	81.20
	-1.01	5.49	4.73	16.07	3.85	-1.34	0.54	0.88	-10.83	-4.50	2.66	-5.13	9.49
2015	922.90	874.90	779.70	881.00	808.00	744.50	698.50	668.10	661.90	660.90	583.50	582.00	-363.70
	-2.41	-5.20	-10.88	12.99	-8.29	-7.86	-6.18	-4.35	-0.93	-0.15	-11.71	-0.26	-38.46
2016	579.80	577.60	549.10	629.10	568.50	636.40	700.00	651.20	703.30	696.30	751.20	706.00	169.20
	-0.38	-0.38	-4.93	14.57	-9.63	11.94	9.99	-6.97	8.00	-1.00	7.88	-6.02	29.07
2017	670.30	725.30	640.10	608.90	568.50	600.60	655.70	743.70	692.60	766.30	727.50	783.40	77.40
	-5.06	8.21	-11.75	-4.87	-6.63	5.65	9.17	13.42	-6.87	10.64	-5.06	7.68	10.96
2018	863.10	898.30	840.50	926.40	1024.40	1022.30	944.00	909.30	905.00	860.00	774.80	741.60	-41.80
	10.17	4.08	-6.43	10.22	10.58	-0.20	-7.66	-3.68	-0.47	-4.97	-9.91	-4.28	-5.34
2019	884.90	931.10	904.00	854.60	876.50	906.00	1013.50	1245.40	1216.80	1200.40	1005.50	1029.20	287.60
	19.32	5.22	-2.91	-5.46	2.56	3.37	11.87	22.88	-2.30	-1.35	-16.24	2.36	38.78
2020	943.80	901.00	860.10	922.60	940.40	975.00	1041.90	1135.70	1065.30	1142.70	1206.70	1212.20	183.00
	-8.30	-4.53	-4.54	7.27	1.93	3.68	6.86	9.00	-6.20	7.27	5.60	0.46	17.78
2021	1286.90	1367.70	1184.10										-28.10
	6.16	6.28	-13.42										-2.32
Average	3.37	1.29	-2.98	4.20	-3.04	0.58	3.21	3.12	-1.76	0.18	-3.13	1.80	Average

ALUMINIUM PRICE MOVEMENT SINCE 2011

Year	JAN	FEB	MAR	APR	MAY	JUN	JUL	AUG	SEP	OCT	NOV	DEC	Growth
2011	114.05	114.35	116.05	122.55	119.25	112.20	115.55	112.60	107.95	106.85	103.10	106.95	-3.20
	3.54	0.26	1.49	5.60	-2.69	-5.91	2.99	-2.55	-4.13	-1.02	-3.51	3.73	-2.91
2012	112.15	112.65	108.35	108.05	111.35	105.65	103.95	103.00	110.95	101.85	113.35	111.75	4.80
	4.86	0.45	-3.82	-0.28	3.05	-5.12	-1.61	-0.91	7.72	-8.20	11.29	-1.41	4.49
2013	110.50	105.40	103.65	100.10	105.95	105.05	105.85	122.10	113.15	112.55	106.75	109.20	-2.55
	-1.12	-4.62	-1.66	-3.42	5.84	-0.85	0.76	15.35	-7.33	-0.53	-5.15	2.30	-2.28
2014	103.90	107.00	104.00	106.75	107.65	111.20	121.45	126.70	119.20	126.85	128.35	116.00	6.80
	-4.85	2.98	-2.80	2.64	0.84	3.30	9.22	4.32	-5.92	6.42	1.18	-9.62	6.23
2015	113.45	112.40	111.95	121.40	108.75	104.95	102.00	107.15	102.60	94.40	96.35	100.15	-15.85
	-2.20	-0.93	-0.40	8.44	-10.42	-3.49	-2.81	5.05	-4.25	-7.99	2.07	3.94	-13.66
2016	103.80	111.25	98.90	111.25	104.00	110.55	108.30	107.20	110.55	115.95	118.00	117.20	17.05
	3.64	7.18	-11.10	12.49	-6.52	6.30	-2.04	-1.02	3.12	4.88	1.77	-0.68	17.02
2017	123.40	126.45	126.20	123.90	123.90	123.55	121.95	135.30	137.90	138.60	131.00	143.30	26.10
	5.29	2.47	-0.20	-1.82	0.00	-0.28	-1.30	10.95	1.92	0.51	-5.48	9.39	22.27
2018	141.65	140.50	130.65	148.50	154.15	149.70	141.40	150.10	145.90	143.95	137.20	128.15	-15.15
	-1.15	-0.81	-7.01	13.66	3.80	-2.89	-5.54	6.15	-2.80	-1.34	-4.69	-6.60	-10.57
2019	136.00	151.10	149.15	146.20	145.35	143.20	140.35	138.70	134.60	132.00	133.55	137.25	9.10
	6.13	11.10	-1.29	-1.98	-0.58	-1.48	-1.99	-1.18	-2.96	-1.93	1.17	2.77	7.10
2020	139.10	136.70	134.45	131.00	131.70	137.95	140.90	146.15	143.80	152.95	167.05	160.95	23.70
	1.35	-1.73	-1.65	-2.57	0.53	4.75	2.14	3.73	-1.61	6.36	9.22	-3.65	17.27
2021	162.25	173.50	176.65										15.70
	0.81	6.93	1.82										9.75
Average	0.81	2.06	-1.72	2.42	-0.79	-0.99	1.00	3.31	-0.75	-0.12	0.53	0.61	Average

The logo for KEDIA ADVISORY is displayed within a dark blue rectangular box. The word "KEDIA" is written in a bold, yellow, sans-serif font, and the word "ADVISORY" is written in a white, sans-serif font to its right.

KEDIA STOCKS & COMMODITIES RESEARCH PVT LTD.
Mumbai. INDIA.

For more details, please contact:
Mobile: +91 9323406035 / 9320096333 / 9619551022
Email: info@kediaadvisory.com
URL: www.kediaadvisory.com
SEBI REGISTRATION NUMBER - INH000006156

General Disclaimers: This Report is prepared and distributed by Kedia Stocks & Commodities Research Pvt Ltd. for information purposes only. The recommendations, if any, made herein are expression of views and/or opinions and should not be deemed or construed to be neither advice for the purpose of purchase or sale through KSCRPL nor any solicitation or offering of any investment /trading opportunity. These information / opinions / views are not meant to serve as a professional investment guide for the readers. No action is solicited based upon the information provided herein. Recipients of this Report should rely on information/data arising out of their own investigations. Readers are advised to seek independent professional advice and arrive at an informed trading/investment decision before executing any trades or making any investments. This Report has been prepared on the basis of publicly available information, internally developed data and other sources believed by KSCRPL to be reliable. KSCRPL or its directors, employees, affiliates or representatives do not assume any responsibility for, or warrant the accuracy, completeness, adequacy and reliability of such information / opinions / views. While due care has been taken to ensure that the disclosures and opinions given are fair and reasonable, none of the directors, employees, affiliates or representatives of KSCRPL shall be liable for any direct, indirect, special, incidental, consequential, punitive or exemplary damages, including lost profits arising in any way whatsoever from the information / opinions / views contained in this Report. The possession, circulation and/or distribution of this Report may be restricted or regulated in certain jurisdictions by appropriate laws. No action has been or will be taken by KSCRPL in any jurisdiction (other than India), where any action for such purpose(s) is required. Accordingly, this Report shall not be possessed, circulated and/ or distributed in any such country or jurisdiction unless such action is in compliance with all applicable laws and regulations of such country or jurisdiction. KSCRPL requires such recipient to inform himself about and to observe any restrictions at his own expense, without any liability to KSCRPL. Any dispute arising out of this Report shall be subject to the exclusive jurisdiction of the Courts in India.